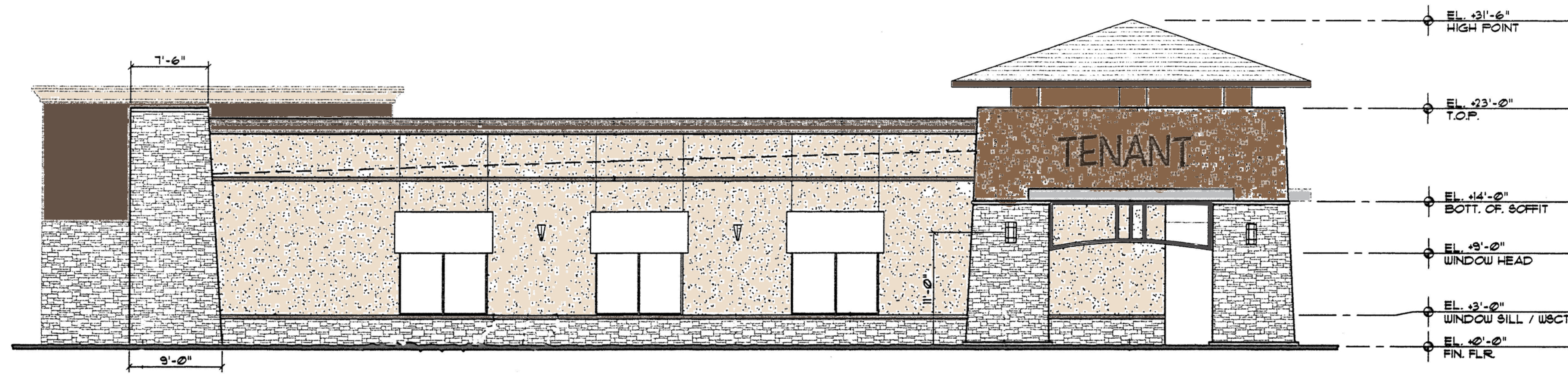




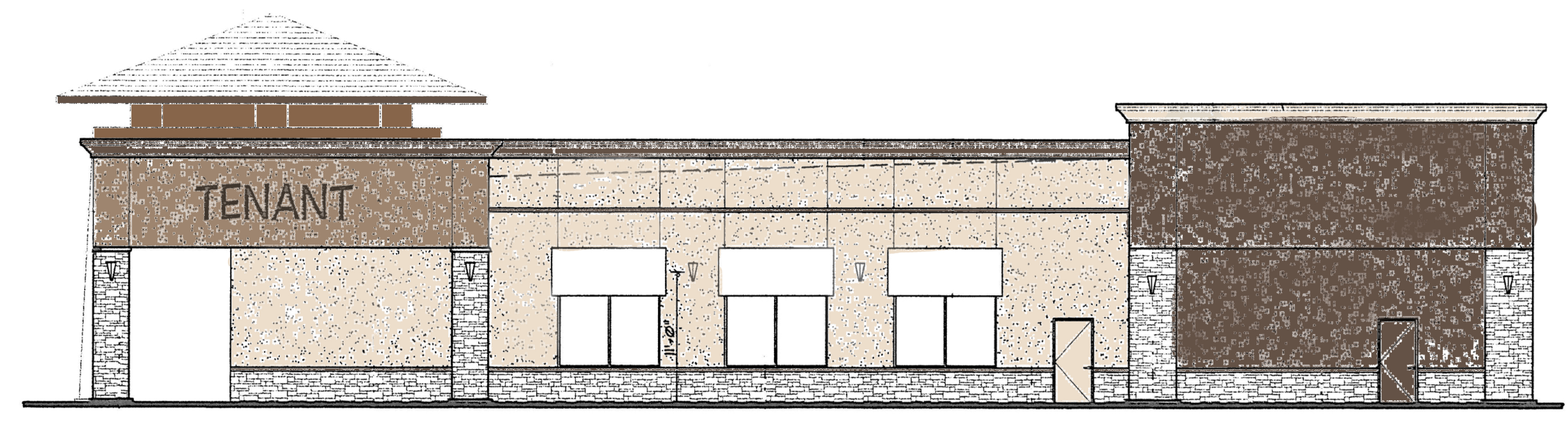
**SOUTH ELEVATION PAINT SCHEME**

SCALE: 1/8" = 1'-0"



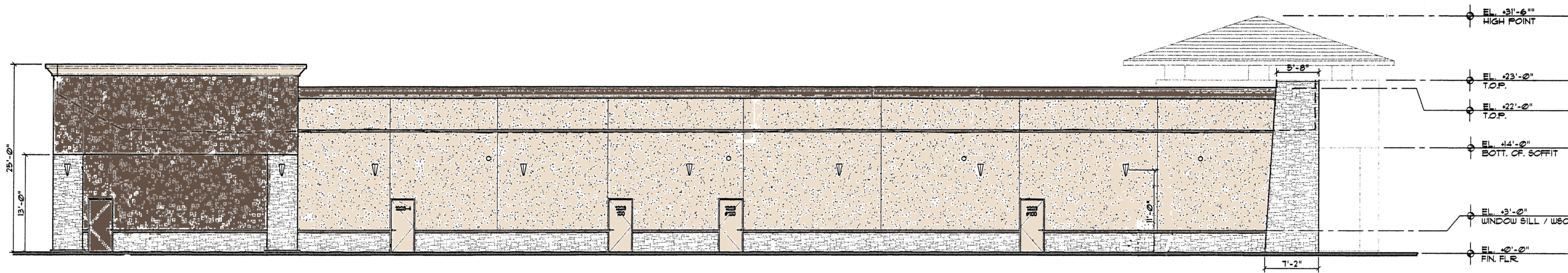
**WEST ELEVATION PAINT SCHEME**

SCALE: 1/8" = 1'-0"



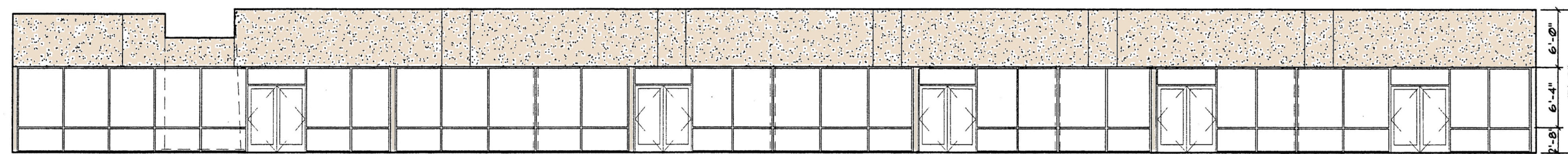
**EAST ELEVATION PAINT SCHEME**

SCALE: 1/8" = 1'-0"



**NORTH ELEVATION PAINT SCHEME**

SCALE: 1/8" = 1'-0"



**SOUTH STOREFRONT ELEVATION PAINT SCHEME**

SCALE: 1/8" = 1'-0"

**GENERAL NOTES**

- PROTECT (E) STOREFRONT FRAMES AND GLAZING FROM DAMAGE DURING PAINTING SO AS TO PREVENT SPILLS, SPLATTER OR OVER SPRAY DURING PAINTING PROCESS. CLEAN SURFACE OF STOREFRONT AND GLAZING SHOULD ANY PAINT TOUCH ITS SURFACE.
- PROTECT (E) TENANT SIGNAGE DURING PAINTING SO AS TO PREVENT SPILLS, SPLATTER OR OVER SPRAY DURING PAINTING PROCESS. CLEAN SURFACE OF SIGNAGE SHOULD ANY PAINT TOUCH ITS SURFACE. OBTAIN PERMISSION OF BUILDING MANAGEMENT PRIOR TO REMOVAL OF ANY SIGNAGE. STORE REMOVED SIGNAGE IN A MANNER TO PREVENT DAMAGE. PAINT BEHIND ALL SIGNAGE.
- PROTECT (E) CONCRETE WALK SO AS TO PREVENT SPILLS, SPLATTER, OR OVER SPRAY DURING PAINTING PROCESS. CLEAN EXISTING CONCRETE WALKS SHOULD ANY PAINT TOUCH ITS SURFACE.
- PROTECT (E) SPRINKLER HEADS WHERE OCCURS FROM PAINT SPILLS, SPLATTER, OR OVER SPRAY DURING PAINTING PROCESS. DO NOT PAINT SPRINKLER HEADS.
- PROTECT (E) LIGHTING, INCLUDING NEON TUBING SO AS TO PREVENT SPILLS, SPLATTER OR OVER SPRAY DURING PAINTING PROCESS. CLEAN EXISTING CONCRETE WALKS SHOULD ANY PAINT TOUCH ITS SURFACE. OBTAIN PERMISSION OF BUILDING MANAGEMENT PRIOR TO REMOVAL OF ANY LIGHTING. STORE REMOVED LIGHTING IN A MANNER TO PREVENT DAMAGE. PAINT BEHIND LIGHTING.
- PROTECT (E) STONE VENEER SO AS TO PREVENT SPILLS, SPLATTER, OR OVER SPRAY DURING PAINTING PROCESS. CLEAN EXISTING STONE VENEER SHOULD ANY PAINT TOUCH ITS SURFACE.
- TERMINATE OR TRANSITION COLORS AT INSIDE CORNERS ONLY.
- PAINT ALL SIDES OF AN BUILDING ELEMENT NOT JUST THE FACE.
- PAINT EXPOSED PORTION OF EXISTING WALL AT STUCCO WEEP SCREEDS TO MATCH ADJACENT SURFACE.
- REPLACE DOOR SIGNAGE IN KIND ON REAR OF BUILDING ARE REQUIRED TO ACCOMMODATE NEW PAINT. DOOR SIGNAGE SHALL BE OF CONTRASTING COLOR.
- PROVIDE PROPER MASKING AND PAINTING METHODS TO ENSURE EVEN AND CLEAN PAINTING IN FIELDS AND AT COLOR/MATERIAL TRANSITIONS.
- FOLLOW ALL MANUFACTURERS RECOMMENDATIONS FOR SURFACE PREP, PRIMING, AND PAINT APPLICATION FOR EACH SURFACE TO BE PAINTED.
- PAINT SITE AMENITIES SUCH AS BIKE RACKS AND LOCKERS, DIRECTORY SIGNAGE, BENCHES, TRASH CANS, BOLLARDS, OR SIMILAR A COLOR CONSISTENT WITH BUILDING. VERIFY COLOR WITH BUILDING MANAGEMENT.
- PAINT EXISTING EXPOSED FLASHING TO MATCH ADJACENT SURFACE.

**PAINT LEGEND**

DUNN EDWARDS "HOPE CHEST" DE460	DUNN EDWARDS "ALMOND LATTE" DE643	DUNN EDWARDS "MIDNIGHT GARDEN" DE681	DUNN EDWARDS "NEUTRAL VALLEY" DE619	DUNN EDWARDS "CHOCOLATE CHUNK" DE600	DUNN EDWARDS "IRON ORE" DE953	DUNN EDWARDS "SHORTBREAD" DE634	DUNN EDWARDS "BLACK BEAN" DE685	DUNN EDWARDS "WHALE WHEAT" DE624	DUNN EDWARDS "SILVER POLISH" DE6314

PROJECT  
**CREKESIDE TOWNE  
CENTER REPAINT**

SHEET TITLE  
**BUILDING PAD 8**

The undersigned architect does not represent that these plans or the specifications in connection therewith are suitable, whether or not modified for any other site than the one for which they were specifically prepared. The architect disclaims responsibility for these plans and specifications if they are used in whole or in part at any other site.

The contractor shall verify and be responsible for all dimensions and conditions on the job and this office must be notified in writing of any variation from the dimensions and conditions shown by these drawings.

This drawing is not final or to be used for construction until signed by the architect and owner.

All drawings and written material appearing herein constitute the original and unaltered work of the Architect and the same may not be duplicated, used or disclosed without written consent of the Architect.

Architect: AK  
Drawn By: JC  
Revisions:

NO.	DATE	DESCRIPTION

Job No.: 1190  
Date: 04/01/11  
drawing no.