



QUEEN CREEK
|-----|
C R O S S I N G

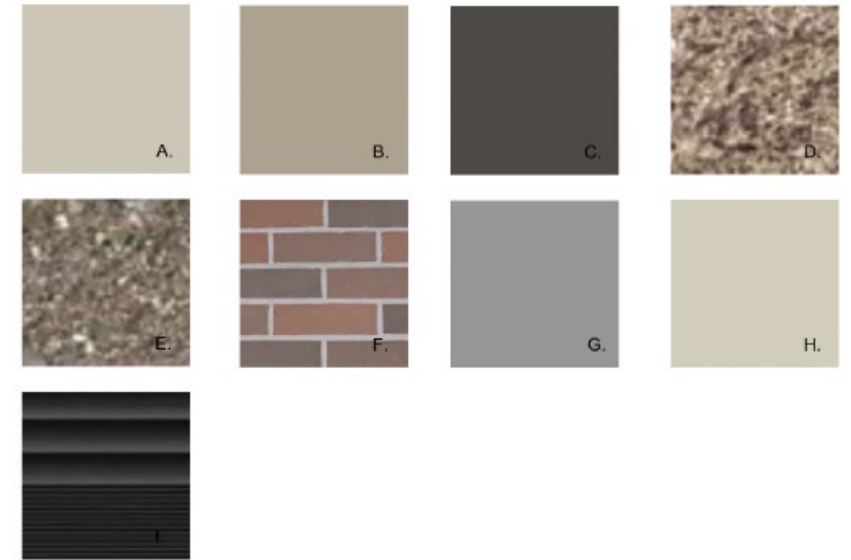
Design Guidelines

Shops A & B

Material Board

Materials

1. INTEGRAL COLOR E.I.F.S. - FINE SAND TEXTURE
2. ANODIZED ALUMINUM STOREFRONT FRAME WITH 1" INSULATED LOW-E, CLEAR GLAZING
3. METAL PANELS
4. THIN BRICK VENEER
5. INTEGRAL COLOR CMU - ACCENT BAND
6. INTEGRAL COLOR CMU - SPLIT-FACE
7. 22 GA PRE-FINISHED METAL CAP FLASHING
8. HOLLOW METAL DOOR AND FRAME – PAINTED
9. STEEL COLUMNS/BEAMS – PAINTED
10. STEEL AWNING AND TIE RODS – PAINTED
11. WALL SCONCES
12. METAL LANDSCAPE SCREENS AT BUILDING WALL-PAINTED



Colors

by Sherwin Williams (or Equal):

- A. SW7036 "ACCESSIBLE BEIGE"
- B. SW7507 "STONE LION"
- C. SW7020 "BLACK FOX"

by Belden Brick (or Equal):

- F. No. 8601

by Atas (or Equal):

- G. METAL PANEL "SLATE GREY (20)"
- H. METAL PANEL "CHAMPAGNE (31)"

by Oldcastle (or Equal):

- I. DARK BRONZE STOREFRONT

by Superlite (or Equal):

- D. SPLIT-FACE 'MONTEREY STONE'
- E. SMOOTH FACE 'HOPI SAND STONE'

| Material | # |
|----------|---|
| Finish | X |

Shops A Elevation



WEST ELEVATION
SCALE: 1/8" = 1'-0"



SOUTH ELEVATION
SCALE: 1/8" = 1'-0"



NORTH ELEVATION
SCALE: 1/8" = 1'-0"

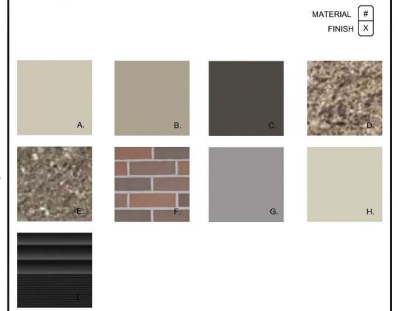


EAST ELEVATION
SCALE: 1/8" = 1'-0"

MATERIAL/COLOR SCHEDULE

- MATERIALS**
- INTEGRAL COLOR E.I.F.S. - FINE SAND TEXTURE
 - ANODIZED ALUMINUM STOREFRONT FRAME WITH 1" INSULATED LOW-E, CLEAR GLAZING
 - METAL PANELS
 - THIN BRICK VENEER
 - INTEGRAL COLOR CMU - ACCENT BAND
 - INTEGRAL COLOR CMU - SPLIT-FACE
 - 22 GA PRE-FINISHED METAL CAP FLASHING
 - HOLLOW METAL DOOR AND FRAME - PAINTED
 - STEEL COLUMNS/BEAMS - PAINTED
 - STEEL AWNING AND TIE RODS - PAINTED
 - WALL SCANCES
 - METAL LANDSCAPE SCREENS AT BUILDING WALL-PAINTED

- COLORS**
- by Sherwin Williams (or Equal):
 A. SW7038 "ACCESSIBLE BEIGE"
 B. SW7507 "STONE LION"
 C. SW7029 "BLACK FOX"
- by Atlas (or Equal):
 G. METAL PANEL "SLATE GREY (207"
 H. METAL PANEL "CHAMPAGNE (317"
- by Superior (or Equal):
 D. SPLITFACE "MONTEREY STONE"
 E. SMOOTH FACE "HOPKINS SAND STONE"
- by Oldcastle (or Equal):
 I. DARK BRONZE STOREFRONT
- by Belden Brick (or Equal):
 F. No. 8001



**QUEEN CREEK
CROSSING**

**EXTERIOR ELEVATIONS (SHOPS A)
QUEEN CREEK CROSSING**
N.W.C. ELLSWORTH RD & QUEEN CREEK RD
QUEEN CREEK, ARIZONA



**UPWARD
ARCHITECTS**

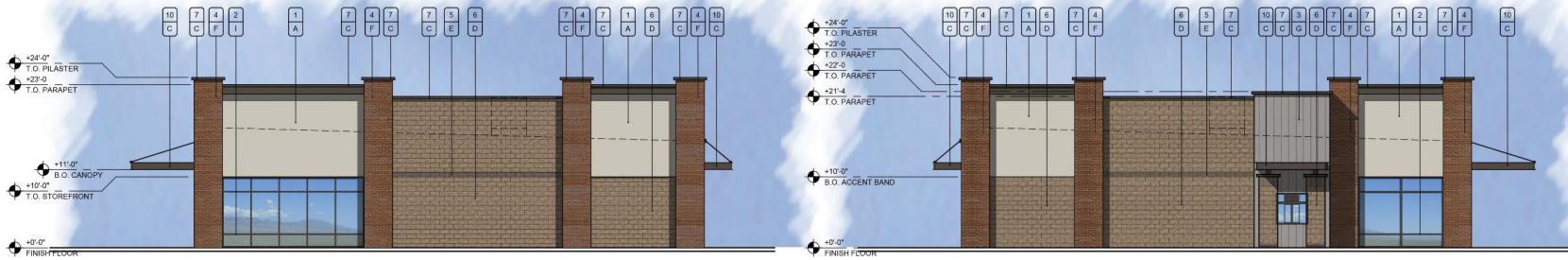
1155 W. Rio Salado Parkway, Suite B-101, Tempe, AZ 85281
602.753.5222 www.upwardarchitects.com

4-4-22
PROJECT NO.: 21010.00

Shops B Elevation



EAST ELEVATION
SCALE: 1/8" = 1'-0"



NORTH ELEVATION
SCALE: 1/8" = 1'-0"

SOUTH ELEVATION
SCALE: 1/8" = 1'-0"

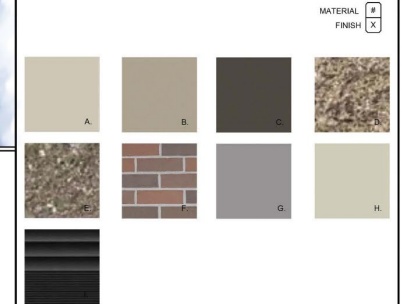


WEST ELEVATION
SCALE: 1/8" = 1'-0"

MATERIAL/COLOR SCHEDULE

- MATERIALS**
1. INTEGRAL COLOR EIFS - FINE SAND TEXTURE
 2. ANODIZED ALUMINUM STOREFRONT FRAME WITH 1" INSULATED LOW-E CLEAR GLAZING
 3. METAL PANELS
 4. THIN BRICK VENEER
 5. INTEGRAL COLOR CMU - ACCENT BAND
 6. INTEGRAL COLOR CMU - SPLIT-FACE
 7. 22 GA PRE-FINISHED METAL CAP FLASHING
 8. HOLLOW METAL DOOR AND FRAME - PAINTED
 9. STEEL COLUMNS/BEAMS - PAINTED
 10. STEEL AWNING AND TIE RODS - PAINTED
 11. WALL SCORERS
 12. METAL LANDSCAPE SCREENS AT BUILDING WALL - PAINTED

- COLORS**
- by Sherwin-Williams (or Equal):
 A. SW7038 "ACCESSIBLE BEIGE"
 B. SW7507 "STONE LION"
 C. SW7029 "BLACK FOX"
- by Atlas (or Equal):
 G. METAL PANEL "SLATE GREY (20)"
 H. METAL PANEL "CHAMPAGNE (31)"
- by Suezette (or Equal):
 D. SPLIT-FACE "MONTEREY STONE"
 E. SMOOTH FACE "HOPI SAND STONE"
- by Oldcastle (or Equal):
 I. DARK BRONZE STOREFRONT
- by Belden Brick (or Equal):
 F. No. 8601



**QUEEN CREEK
CROSSING**

**EXTERIOR ELEVATIONS (SHOPS B)
QUEEN CREEK CROSSING**
N.W.C. ELLSWORTH RD & QUEEN CREEK RD
QUEEN CREEK, ARIZONA



**UPWARD
ARCHITECTS**

1155 W. Rio Salado Parkway, Suite B-101, Tempe, AZ 85281
602.753.5222 www.upwardarchitects.com

4-12-22
PROJECT NO.: 21010.00